



Gc-MS Analysis and Anti-Bacterial Activity of *Lantana Camara* Extracts

¹Al-Itabi A. O.

²Aknur T.

^{1,2}Alfarabi Kazakh National University Department of Fundamental Medicine/
Kazakhstan

Article history

Received: 10 / 5 /2023

Revised: 25 / 7 /2023

Accepted: 1 / 8 /2023

DOI:

10.36320/ajb/v15.i2.11985

*Corresponding Author:

Email:

aliosama1990@gmail.com

Abstract: *Scientists from all over the world are currently investigating medicinal plants. Plants have long been used as a source of medicine by humans due to their low cost and long history of use. Due to technological limitations, most traditional medicines in the past were derived from plants. In this study, the anti-bacterial and phytochemical properties of Lantana camara extracts from Iraq were analyzed. The extract composition was analyzed using GC/MS. The broth dilution assay to evaluate the antimicrobial activity of each extract. The aerial parts of the Lantana camara herb were extracted with n-hexane, ethanol, and methanol. The anti-bacterial activity of extract's was evaluated. The n-hexane extract was found to have a 400 µg/mL minimum inhibitory concentration (MIC), against Proteus valguris, while the ethanolic and methanolic extracts showed similar anti-bacterial activity at 100 µg/mL., While the lowest inhibitory concentration of n-hexane and ethanolic extracts was 400 µg/mL, and methanolic extract was 200 µg/mL. against Bacillus subtilis. This means that the methanolic extract is more effective and inhibits bacterial growth at lower concentrations. This article will be useful for researchers studying the biological activity, phytochemical composition, and anti-bacterial activity of Lantanacamara.*

Keywords: *Lantana camara, n-Hexane extract, Ethanolic extract, anti-bacterial activity. GC-MS*

1. Introduction

There are many compelling reasons to pursue the discovery of anti-bacterial plants

with potential medical applications. We urgently need new methods of treating bacterial infections as antibiotic resistance continues to rise. For hundreds of years, people have turned

to medicinal plants as a source of new compounds that kill bacteria to treat everything from common colds to bacterial infections. Unlike antibiotics, medicinal plants are typically less expensive and more accessible. This is especially true in developing nations, where access to medical care and antibiotics may be limited [1,2]. Due to their low cost and wide availability, medicinal plants are rapidly gaining favour as a primary source of healthcare for underserved communities [3]. Medicinal plants are used more frequently because of their importance in medicine and the activity of the secondary metabolites they contain [4].

Lantana camara is a small shrub with triangular stems. Its maximum dimensions are 1–3 meters in height and 2.5 meters in width. The leaves are ovate in shape, crenate-serrate, rugose on top and scabrous on the underside, and pointed either acutely or sub-acutely. They are between 3 and 8 centimeters in length and 3 and 6 centimeters in width and are a bright green color. The plant's leaves and stems are covered in coarse hairs [5].

There is a wide range of possible shades of red, orange, and white because of the gradual color changes that occur as these colors age. Flowers with yellow throats bloom for a long time due to the axillary head's role in their nearly constant bloom and gradual color change. The axillary head is constantly covered in yellow-throated flowers. The calyx is tiny, the corolla tube is short, and the lobes on the 6-7 mm broad limb are all different sizes. The flower clusters, or inflorescences, are set up in pairs in the axils of the leaves on opposite sides of the plant. About 24–40 dead flowers were discovered inside. The plant's root system quickly recovers from repeated cuttings and produces new shoots [6].

Lantana camara is an essential plant that has been utilized in alternative medical practices for many years. The *Lantana camara* is a species that belongs to the genus *Lantana*, the division Magnoliophyte, the class Magnoliopsida, the order Lamiales, and the family Verbenaceae. It has been used as a treatment for a wide range of diseases in different countries all over the world. Medical professionals have successfully used the leaves to treat a wide variety of conditions, including but not limited to: wounds, rheumatism, ulcers, catarrhal infections, cancer, tetanus, malaria, asthma, ulcers, eczema, bilious fever, tumors, chicken pox, swelling, sores, Measles, ataxy of the abdominal viscera; fevers; the common cold; and hypertension. Patients in Ghana suffering from bronchitis frequently consume tea made from the boiled plant. A combination of powdered root and milk is given to children suffering from stomachaches or worms. When applied to the skin, lantana oil helps heal minor cuts and prevents wounds from becoming more widespread. Both leprosy and scabies were treated with decoctions used to the affected areas of the skin [7,12].

It has been reported that an aqueous extract of *L. camara* has anti-inflammatory properties in albino rats. In the carrageenan-induced paw oedema test with rats, extract treatment (500 mg/kg body weight) significantly reduced paw volume [13]. An antiulcerogenic effect of a methanol extract of *L. camara* leaves was observed in rats with ethanol, aspirin and cold-resistant stress-induced gastric lesions. When the affected rats were pretreated with the extract (200 and 400 mg/kg body weight), it significantly reduced the severity of ulcers caused by aspirin, ethanol, and cold restraint stress. The extract's antiulcerogenic activity was dose-dependent

across all models [14]. It has been demonstrated that calcium oxalate urolithiasis can be prevented in male albino rats exposed to ethylene glycol and ammonium chloride by administering an ethanolic extract of the leaves of *L. camara*. Following treatment with the extract, there was a notable reduction in the accumulation of calcium and oxalate and an increase in the amount of calcium, oxalate, and creatinine that was excreted in the urine [15]. Rats that had been given alloxan to make them diabetic found that a methanol extract of *L. camara* leaves lowered their blood sugar. When rats with diabetes caused by alloxan were given an oral dose of 400 milligrams per kilogram of body weight of a methanol extract of *L. camara* leaves, their blood sugar levels dropped to 121.94 milligrams per deciliter [16].

Several different cultivars of the *Lantana camara* plant have been found to have properties that stop bacteria from growing on their leaves and flowers. The anti-bacterial activity of three solvent extracts of leaves and flowers from four different kinds of *L. camara* was found to be very strong against *Escherichia coli*, *Bacillus subtilis*, and *Pseudomonas aeruginosa*, but not so strong against *Staphylococcus aureus* [17]. The leaves and roots of *Lantana camara* are said to kill bacteria when they are extracted with ethanol. The effectiveness of the anti-bacterial treatment was evaluated in vitro using Microdilution assays. The extracts successfully eliminated two multi resistant strains of *Escherichia coli* and *Staphylococcus aureus* and other bacteria, including *Proteus vulgaris*, *Pseudomonas aeruginosa*, *Vibrio cholera*, and others [18].

Using the broth microdilution and agar well diffusion method, methanolic extracts of various *Lantana camara* parts were examined

for antimicrobial action against ten bacteria and five fungi. Both Gram-positive *Bacillus cereus* and Gram-negative *Salmonella typhi* were inhibited by *L. camara* leaf extract [19]. A typical plant pathogen, *Alternaria* sp., was used to see if *Lantana camara* could stop plant diseases caused by it. The food poisoning plate method was used to compare the antifungal activity of extract concentrations of 10, 15, and 20 mg/mL. At a 20 mg/mL concentration, *L. camara* was very effective against the fungus *Alternaria* sp [20]. Both ethanol and hot water extracts of *L. camara* were looked at to see if they could stop white rot and brown rot in wood. Even at such a low concentration (0.01%), the ethanol extract still killed the white and brown rot fungi. The other extract worked just as well [21].

2. Methodology

Collection of plant

From August 1st, 2021, through December 30th, 2021, fresh aerial parts of *Lantana camara* were collected from Baghdad City. Was. Deionized water was then used to wash them once more. Finally, they were allowed to air-dry at room temperature. The dried plant was then broken up into smaller pieces and kept in a cool, dark place until an extract was needed.

Chemical solvents

Maceration is one of the simplest methods of extraction. It entails soaking coarse and powdered plant material in solvents such as n-hexane (99%), ethanol (99.99%), and methanol (99.8%). Extraction of bioactive compounds from plants using this method is standard and does not cost very much. Polar compounds can be extracted with methanol and ethanol, while nonpolar compounds are extracted with n-hexane and other nonpolar solvents [22,24].

Preparation of Extracts by Maceration method

Lantana camara's aerial parts were removed by maceration with solvents of different polarities. In a nutshell, 800 mL of n-Hexane, 800 mL of ethanol, and 500 mL of methanol were used to treat 100 g of powder, 95 g of powder, and 90 g of powder, respectively. The supernatant was filtered out in the dark at 25 degrees Celsius for 48 hours. To further purify the extracts and isolate the bioactive compounds, this procedure was repeated, and the solvent in the supernatant was evaporated using a vacuum rotary evaporator [25].

GC/MS analysis

The condition of GC/MS is as follows:

1. The type of detector used was a mass spectrometer (MS), the injection technique used was a split (80:1), the injector temperature was 260 degrees Celsius, the injector volume was one microliter, the carrier gas was helium, the flow rate was 1 milliliter per minute, and the mode used was scanned 50-550.

2. The capillary columns used were HP-5MS and measured 30 millimeters in length, 0.25 millimeters in diameter, and 0.25 micrometers in thickness .

3. temperature program: 60 degrees Celsius for four minutes, then three degrees Celsius per minute up to 100 degrees Celsius for two minutes, and then four degrees Celsius per minute up to 260 degrees Celsius for five minutes.

4 .Scan Range (50–500) and (EM) Detector for the Mass Spectrometer (70 V).

5. By comparing the average peak area of each component to the total measurement area, we were able to calculate the relative percentage amount of each element. Because of this, we were able to figure out how much each

part made up of the whole. The MS Solution software was the system's operating system and data collection tool.

Preparation of bacteria

The pathogenic bacteria (*Proteus vulgaris* and *Bacillus subtilis*) were obtained from the BPC laboratory analysis center.

Preparation of Mueller-Hinton broth

Mueller-Hinton broth powder requires 21 grams per liter of water. Use a mixer to combine and dissolve them combine and dissolve them thoroughly. To ensure sterilization, add them to the final storage containers (like a conical flask) and autoclave at 121 degrees for 15 minutes [26].

Broth dilution assay

The broth dilution assay was utilized to perform the Minimum Inhibitory Concentration (MIC) test. The minimal inhibitory concentration (MIC) test determines the lowest concentration of antimicrobial agent that significantly slows growth. A suspension with a turbidity of 0.5 Mc Farland was used to prepare the bacteria. The dilutions of the aerial part extract were 400, 200, 100, 50, 25, 12.5, 6.25, and 3.125 µg/ml (W/V). The extract was then given a bacterial suspension, and it was incubated for 24 hours at 37 degrees Celsius. The MIC was the lowest, clearest concentration. Three times of experiments were conducted on each tested specimen [27].

3.Results and Discussion

Maceration method

The solvents n-hexane, ethanol, and methanol were used to extract the 100 g of air-dried whole plants. A crude extract evaporated the organic solvent at 30–40 ° C under low pressure.

During the maceration extraction method, the aerial parts of *Lantana camra* are broken down and put into a container. The container is

then covered, and it stays that way for at least three days. The polarity of the solvents can influence the maceration method. *Lantana camara* aerial parts were extracted in the following order: n-hexane in 800 ml, ethanol in 800 ml, and methanol in 500 ml. The percentage yields of the extracts were 2% (light green), 3.6% (dark green), and 3.3% (dark green) for n-hexane, ethanol, and methanol, respectively. These findings demonstrated that the aerial parts of *Lantana camara* were more soluble in ethanol.

GC/MS analysis of n-Hexane extract

The chromatograms of the aerial part of the *Lantana camara* plant reveal that different compounds remain in the plant for varying amounts of time. The GC/MS chromatogram of the n-hexane extract (111) distinct compounds, as shown in Figure (1). The bioactive compound in the aerial part of *Lantana camara* contributes to the plant's medicinal value.

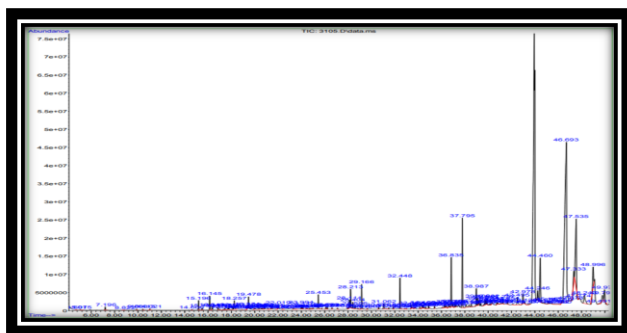


Figure (1): GC/MS of the n-Hexane extract of aerial part of *lantana camara*.

In *Lantana camara* n-Hexane extract, the most essential phytochemical compounds are Eucalyptol, Naphthalene1,2,3,5,6,8a-hexahydro-4,7-dimethyl-1-(1-methylethyl)-, (1S-cis), Alpha Tocospiro A,trans-Geranylgeraniol Caryophyllene oxide, 9,12,15-Octadecatrienoic acid, methyl ester (ZZZ)-, Phytol, Neophytadiene, Alfa-Copaene, , Vitamin E, Alpha amyirin and Iso spathulenol. As Table (1) shows, this chemical is used for a wide range of biological purposes, including: -

Table (1): GC/MS of n-Hexane extract and biological activity of each compound.

No	Compounds	Area %	RT (min)	Biological activity
1	Eucalyptol	0.25	4.689	anti-inflammatory antioxidant [28]
2	Alfa-Copaene	0.58	15.196	Anticancer antigenotoxic Antioxidant [29]
3	Naphthalene1,2,3,5,6,8a-hexahydro-4,7-dimethyl-1-(1-methylethyl) (1S-cis)	0.78	18.257	Antimicrobial anti-inflammatory [29]
4	Caryophyllene oxide	0.71	19.476	Antitumor Antioxidant Analgesic anti-inflammatory [30,31]
5	Neophytadiene	0.23	23.996	anti-inflammatory antimicrobial [32]
6	9,12 Octadecatrienoic acid (Z, Z), methyl ester	0.42	28.111	Anti-inflammatory Immunomodulatory [33]
7	9,12,15-Octadecatrienoic acid, methyl ester, (ZZZ)	1.29	28.214	Anti-inflammatory immunomodulatory [33]
8	Phytol	0.50	28.406	Antioxidant anti-Inflammatory Analgesic [34]
9	Alpha Tocospiro A	0.34	38.114	anti-inflammatory anti-diabetic (35)
10	trans-Geranylgeraniol	0.35	39.712	Anticancer [36]
11	Vitamin E	0.39	41.258	Antioxidant anti-inflammatory [37]
12	Alpha amyirin	0.33	45.145	Antioxidant [38]
13	Iso spathulenol	0.25	20.348	Antioxidant anti-Inflammatory [39]

GC/MS analysis of an ethanolic extract

The chromatograms of the aerial part of the *Lantana camara* plant reveal that different compounds remain in the plant for varying amounts of time. The GC-MS chromatogram of the ethanolic extract shows [28] distinct

Compounds, as displayed in Figure (2). The bioactive compound in the aerial part of *Lantana camara* contributes to the plant's medicinal value.

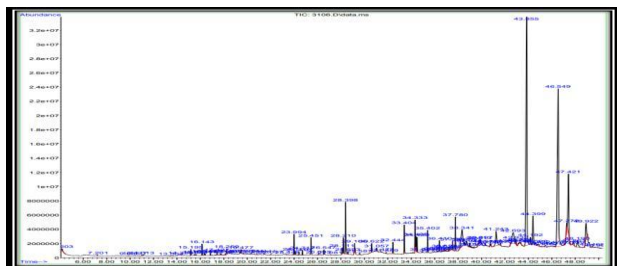


Figure (2): GC/MS of the ethanolic extract of the aerial part of *lantana camara*.

Alfa Copaene, Caryophyllene, Neophytadiene, and 9, 12, 15 Octadecatrienoic Acid, Methyl Ester (ZZZ), are the most essential phytochemical compounds found in *Lantana camara* ethanol extract. This chemical has a wide range of biological activities, as shown in Table (2).

Table (2): GC/MS of an ethanolic extract and biological activity of each compound.

No	Compounds	Area %	RT (min)	Biological activity
1	Alfa Copaene	0.32	15.196	Anticancer antigenotoxic Antioxidant [28]
2	Caryophyllene	0.61	16.145	antioxidant antimicrobial anticancer [30,31]
3	Neophytadiene	0.95	23.996	anti-inflammatory antimicrobial [32]
4	9,12,15 Octadecatrienoic Acid, Methyl Ester (ZZZ)	0.95	28.209	Anti-inflammatory immunomodulatory [33]

GC-MS analysis of a methanolic extract

The chromatograms of the aerial part of the *Lantana camara* plant reveal that different compounds remain in the plant for varying amounts of time. The methanolic extract's GC-MS chromatogram reveals 43 distinct compounds, as shown in Figure (3). The bioactive compound in the aerial part of *Lantana camara* contributes to the plant's medicinal value.

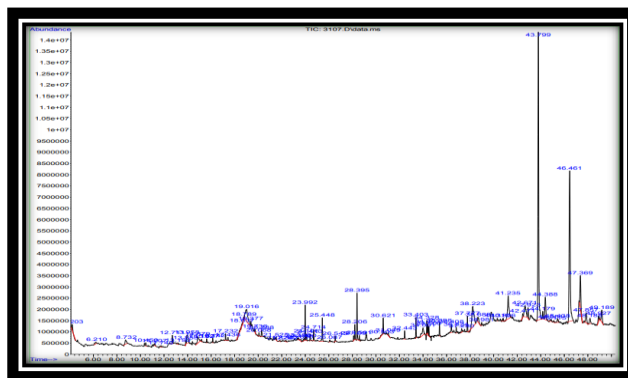


Figure (3): GC-MS of the methanolic extract of the aerial part of *lantana camara*.

The main phytochemical compounds found in *Lantana camara* methanol extract are Mequinol, Methoxy-4-vinyl phenol, 7, 10, 13-Hexadecatrienoic acid, methyl ester, Hexanedioic acid, dioctyl ester and Squalene. This chemical has a wide range of biological activities, as shown in Table (3).

Table (3): GC-MS of methanolic extract and biological activity of each compound.

No	Compounds	Area%	RT (min)	Biological activity
1	Mequinol	0.55	8.731	Topical treatment of melasma [40]
2	Methoxy-4-vinylphenol	1.11	13.956	Anti-bacterial [41]
3	7,10,13-Hexadecatrienoic acid, methyl ester	0.66	28.204	Antimicrobial Antioxidant Anti-inflammatory[42]
4	Hexanedioic acid, dioctyl ester	0.42	34.326	Antioxidant antiandrogenic [43]
5	Squalene	0.76	37.777	Anti-bacterial antioxidant Antitumor [43]

Broth microdilution assay

In the anti-bacterial analysis, minimum inhibitory concentration was used. The aerial part extract is prepared in three different solvents: n-hexane, ethanol, and methanol, and the bacteria analyzed are *Proteus vulgaris* and *Bacillus subtilis* in various concentrations of {3.125, 6.25, 12.5, 25, 50, 100, 200 and 400} Micrograms per milliliter. A lower concentration was created by diluting the

highest. There are remarkable positive results in the anti-bacterial analysis. To determine how well an anti-bacterial agent works, we need to know its minimum inhibitory concentration (MIC) value. A low MIC value could mean that the bioactive compound is very effective or that microorganisms will not likely become resistant to it. Figures 4 and 5 show what happens to *Proteus vulgaris* and *Bacillus subtilis* when the MIC value of each extract is changed by changing the concentration used. MIC values for *Proteus vulgaris* and *Bacillus subtilis* were between 100 and 400 [$\mu\text{g/ml}$].

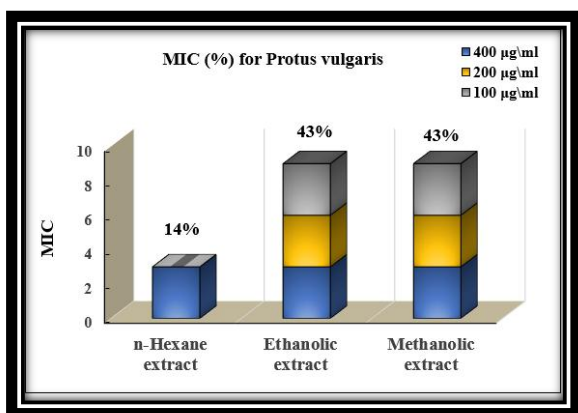


Figure (4) minimum inhibitory concentration (MIC) value for proteus vulgaris.

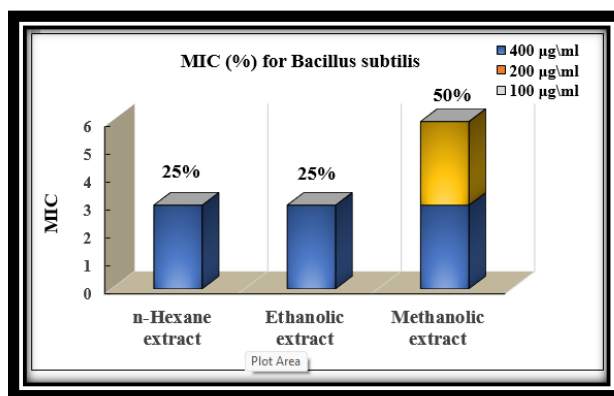


Figure (5) minimum inhibitory concentration (MIC) value for bacillus subtilis

4. Conclusion

This study demonstrated that extracts taken from the aerial parts of *Lantana camara* contain different compounds that have a lot of different biological activities and the ability to inhibit the growth of different species of bacteria .

5. Acknowledgement

The author would like to thank the Department of Fundamental Medicine at Al-Farabi Kazakh National University and his supervisor for helping, inspiring, and encouraging him as he wrote this review article.

6. Conflict of interest

The authors of this article declare that there are no conflicts of interest.

7. References

1. DOLATKHAHI, Mehdi; DOLATKHAHI, Ali; NEJAD, Javad Bagher. Ethnobotanical study of medicinal plants used in Arjan–Parishan protected area in Fars Province of Iran. *Avicenna journal of phytomedicine*, 2014, 4.6: 402.
2. ZHANG, X. Regulatory Situation of Herbal Medicines a worldwide Review. Traditional Medicine Programme. *World Health Organization, WHO/TRM/98.1*, 1998.
3. WORLD HEALTH ORGANIZATION, et al. *WHO traditional medicine strategy: 2014-2023*. World Health Organization, 2013.
4. ORAIBI, Amjad I.; ABDULHAMZA, Hayder M. Chemical profiling of nonpolar compounds of *Onopordum acanthium* using GCMASS. *Pharmacognosy Journal*, 2022, 14.6s.
5. A. E. Al-Snafi, “Chemical constituents and pharmacological activities of *Lantana camara*-A review,” *Asian J Pharm Clin Res*, vol. 12912, pp. 10–20, 2019.
6. J. Benites *et al.*, “Composition and biological activity of the essential oil of Peruvian *Lantana camara*,” *J. Chil. Chem. Soc.*, vol. 54, no. 4, pp. 379–384, 2009.
7. PRIYA, Charles Lekhya, et al. Antioxidant activity of *Achyranthes aspera* Linn stem extracts. *Pharmacologyonline*, 2010, 2.2: 228-237.
8. KENSA, V. M. Studies on phytochemical screening and antibacterial activities of *Lantana camara* Linn. *Plant Sciences Feed*, 2011, 1.5: 74-79.
9. KALITA, Sanjeeb, et al. Phytochemical composition and in vitro hemolytic activity of *Lantana camara* L.(Verbenaceae) leaves. *Pharmacology online*, 2011, 1: 59-67.
10. SAXENA, Mamta; SAXENA, Jyoti; KHARE, Sarita. A brief review on: Therapeutical values of *Lantana camara* plant. *International journal of pharmacy & life sciences*, 2012, 3.3.
11. BHAKTA, Deepita; GANJEWALA, Deepak. Effect of leaf positions on total phenolics, flavonoids and proanthocyanidins content and antioxidant activities in *Lantana camara* (L). *Journal of scientific Research*, 2009, 1.2: 363-369.
12. JANARDHAN, Bhore Subhash; VIJAYAN, Komathi. Types of endophytic bacteria associated with traditional medicinal plant *Lantana camara* Linn. *Pharmacognosy Journal*, 2012, 4.32: 20-23.
13. GIDWANI, B. K., et al. Analgesic, anti-inflammatory and anti-hemorrhoidal activity of aqueous extract of *Lantana camara* Linn. *Research Journal of Pharmacy and Technology*, 2009, 2.2: 378-381.
14. THAMOTHARAN, G., et al. Antiulcerogenic effects of *Lantana camara* Linn. leaves On in vivo test models in rats. *Asian journal of pharmaceutical and clinical research*, 2010, 3.3: 57-60.
15. MAYEE, R.; THOSAR, A. Evaluation of *Lantana camara* Linn.(Verbenaceae) for antiurolithiatic and antioxidant activities in rats. *International journal of pharmaceutical and clinical research*, 2011, 3.1: 10-14.
16. GANESH, T., et al. Pharmacognostic and anti-hyperglycemic evaluation of *Lantana camara* (L.) var. *aculeate* leaves in alloxan-induced hyperglycemic rats. *Int J Res Pharm Sci*, 2010, 1.3: 247-252.
17. GANJEWALA, Deepak, et al. Biochemical compositions and antibacterial activities of *Lantana camara* plants with yellow, lavender, red and white flowers. *EurAsian Journal of BioSciences*, 2009, 3.10: 69-77.
18. BARRETO, F. S., et al. Antibacterial activity of *Lantana camara* linn *lantana montevidensis* brig extracts from cariri-ceara, Brazil. *Journal of young pharmacists*, 2010, 2.1: 42-44.
19. POUR, Badakhshan Mahdi, et al. A comparative study: antimicrobial activity of methanol extracts of *Lantana camara* various parts. *Pharmacognosy Research*, 2009, 1.6.
20. SRIVASTAVA, Deepika; SINGH, Padma. Antifungal Potential of Two Common Weeds Against Plant Pathogenic Fungi-sps. *Alternaria*.
21. TRIPATHI, Sadhna, et al. Potential of *Lantana camara* Linn. weed against wood destroying fungi. *Indian Forester*, 2009, 135.3: 403.
22. PANDEY, Amita; TRIPATHI, Shalini. Concept of standardization, extraction and pre phytochemical screening strategies for herbal drug. *Journal of Pharmacognosy and Phytochemistry*, 2014, 2.5: 115-119.
23. SIMORANGKIR, Murniaty; NAINGGOLAN,

- Bajoka; SILABAN, Saronom. Secondary metabolites review. *Animal Science Papers and Reports*, 2019, 37.2: phytochemical analysis of n-Hexane, ethyl acetate and ethanol extracts of Sarang banua (*Clerodendrum fragrans* Vent Willd) leaves. In: AISTSSE 2018: 35. MOHAMMED, Hamdoon A., et al. Phytochemical Proceedings of The 5th Annual International Seminar on Trends in Science and Science Education, AISTSSE 2018, 18-19 October 2018, Medan, Indonesia. European Alliance for Innovation, 2019. p. 461.
24. KHAN, Barkat Ali, et al. Investigation of the effects of extraction solvent/technique on the antioxidant activity of *Cassia fistula* L. *Journal of Medicinal Plants Research*, 2012, 6.3: 500-503.
25. INGLE, Krishnananda P., et al. Phytochemicals: Extraction methods, identification and detection of bioactive compounds from plant extracts. *Journal of Pharmacognosy and Phytochemistry*, 2017, 6.1: 32-36.
26. BAUER, A. W. Antibiotic susceptibility testing by a standardized single diffusion method. *Am. J. Clin. Pathol.*, 1966, 45: 493-496.
27. SEOL, Geun Hee; KIM, Ka Young. Eucalyptol and its role in chronic diseases. *Drug discovery from mother nature*, 2016, 389-398.
28. TÜRKEZ, Hasan; CELIK, Kübra; TOĞAR, Başak. Effects of copaene, a tricyclic sesquiterpene, on human lymphocytes cells in vitro. *Cytotechnology*, 2014, 66: 597-603.
29. ROKADE, Y. B.; SAYYED, R. Z. Naphthalene derivatives: a new range of antimicrobial agents with high therapeutic value. *ChemInform*, 2011, 42.21: no-no.
30. DAHHAM, Saad S., et al. The anticancer, antioxidant and antimicrobial properties of the sesquiterpene β -caryophyllene from the essential oil of *Aquilaria crassna*. *Molecules*, 2015, 20.7: 11808-11829.
31. FRANCOMANO, Fabrizio, et al. β -Caryophyllene: a sesquiterpene with countless biological properties. *Applied Sciences*, 2019, 9.24: 5420.
32. RAMAN, B. Venkata, et al. Antibacterial, antioxidant activity and GC-MS analysis of *Eupatorium odoratum*. *Asian J Pharm Clin Res*, 2012, 5.2: 99-106.
33. SINGH, Surender, et al. Evaluation of anti-inflammatory activity of plant lipids containing α -linolenic acid. 2008.
34. YEUNG, Andy Wai Kan, et al. Resveratrol, a popular dietary supplement for human and animal health. *Quantitative research literature analysis-a*
35. MOHAMMED, Hamdoon A., et al. Phytochemical characterization, in vitro anti-inflammatory, anti-diabetic, and cytotoxic activities of the edible aromatic plant; *Pulicaria jaubertii*. *Molecules*, 2021, 26.1: 203..
36. SIANIPAR, Nesti Fronika; PURNAMANINGSIH, Ragapadmi. Enhancement of the contents of anticancer bioactive compounds in mutant clones of rodent tuber (*Typhonium flagelliforme* Lodd.) based on GC-MS analysis. *Pertanika Journal of Tropical Agricultural Science*, 2018, 41.1.
37. JIANG, Qing. Natural forms of vitamin E: metabolism, antioxidant, and anti-inflammatory activities and their role in disease prevention and therapy. *Free Radical Biology and Medicine*, 2014, 72: 76-90.
38. KAREN CARDOSO, Bruna, et al. Antioxidant activity of α and β -amyrin isolated from *Myrcianthes pungens* leaves. *Natural product research*, 2020, 34.12: 1777-1781.
39. DO NASCIMENTO, Kamilla Felipe, et al. Antioxidant, anti-inflammatory, antiproliferative and antimycobacterial activities of the essential oil of *Psidium guineense* Sw. and spathulenol. *Journal of ethnopharmacology*, 2018, 210: 351-358.
40. BANDYOPADHYAY, Debabrata. Topical treatment of melasma. *Indian journal of dermatology*, 2009, 54.4: 303..
41. RUBAB, Momna, et al. Bioactive Potential of 2-Methoxy-4-vinylphenol and Benzofuran from *Brassica oleracea* L. var. capitata f. rubra (Red Cabbage) on Oxidative and Microbiological Stability of Beef Meat. *Foods*, 2020, 9.5: 568.
42. ALQAHTANI, Fulwah Yahya, et al. Chemical composition and antimicrobial, antioxidant, and anti-inflammatory activities of *Lepidium sativum* seed oil. *Saudi journal of biological sciences*, 2019, 26.5: 1089-1092.
43. SHEELA, D., et al. GC-MS analysis of bioactive constituents from coastal sand dune taxon-*Sesuvium portulacastrum* (L.). *Bioscience discovery*, 2013, 4.1: 47-53.