

In-Vitro evaluation of Isolated *Staphylococcal*-bacteriophage in Killing Methicillin-Resistant *Staphylococcus aureus*

Sarhan Rashid Sarhan

Orooba Mohammed Saeed Ibrahim

Serwa Ibrahim Salih

*Department of Physiology and Pharmacology, College of Veterinary Medicine,
Baghdad University, Iraq

**Department of Surgery, College of Veterinary Medicine, Baghdad University, Iraq

E-mail: dr_surhan2000@yahoo.com

Abstract:

The present study was carried out to isolate and identified the *Staphylococcal*-specific bacteriophage from swage water by using agar overlay method and to investigate the anti-*Staphylococcal* activity of isolated Bacteriophage in-vitro. Two experiments were performed in this present study; the first one was isolation and identification of Methicillin-Resistant *Staphylococcus aureus* (MRSA) from post-traumatic bone infection. While the second experiment included study the infectivity of bacteriophage in-vitro to MRSA as well as effect of temperature and pH on the infectivity of phage was also studied. Results of antimicrobial susceptibility test of *S. aureus* isolates revealed that most of isolates were resistant to Methicillin, Cefoxitin and Pencillin G. *Staphylococcus aureus* phage was isolated from sewage samples by agar overlay method, the phage was characterized by clear, circular plaques ranged between 2-3 mm in diameter. TTA method for determined the Phage MIC appears to be both reliable, and reproducible.

Keywords: Methicillin-resistant *Staphylococcus aureus* _ Bacteriophage_Tetrazolium assay,
Bone infection.

تقيم فعالية العاثي البكتيري المعزول في قتل جرثومة المكورات العنقودية الذهبية المقاومة للمثيسيلين مختبريا

سرحان راشد سرحان* عروبة محمد سعيد ابراهيم* سروة ابراهيم صالح**

* فرع الفسجلة والادوية، كلية الطب البيطري-جامعة بغداد

** فرع الجراحة والتوليد، كلية الطب البيطري-جامعة بغداد

الخلاصة:

الدراسة الحالية تضمنت عزل وتشخيص عاثي المكورات العنقودية الذهبية من المياه الثقيلة باستخدام طريقة الكساء وشملت ايضا اختبار الفعالية المضادة للمكورات العنقودية الذهبية مختبريا. لقد اجريت تجربتين في هذا البحث: التجربة الاولى تضمنت عزل وتشخيص المكورات العنقودية المقاومة للمثيسيلين من اصابات العضم. بينما التجربة الثانية تضمنت دراسة فعالية العاثي البكتيري المضادة للمكورات وكذلك دراسة تاثير الحرارة والاس الهائيدروجيني على فعالية العاثي. نتائج فحص الحساسية للمكورات المقاومة للميثيسيلين اظهرت اغلب العزلات مقاومة للميثيسيلين، السيفوكسين والبنسلين. تميزت بقع العاثي بكونها

دائرية وواضحة وتراوح حجمها بين 2-3 ملليمتر. طريقة التترازوليم استخدمت لتقدير التركيز الادني للعائي والمثبط للبكتريا وكانت الطريقة جدا فعالة ومناسبة ومختصرة للوقت.

Introduction

MRSA stands for Methicillin-resistant *Staphylococcus aureus*, a type of *S. aureus* that has become resistant to certain antibiotics such as methicillin, penicillin, amoxicillin, and is thus more difficult to treat. MRSA often lives on the skin or in the nose of healthy people without causing symptoms (this is called colonization). It can, however, cause skin and other infections. Most infections are minor, such as pimples and boils. Serious infections such as wound infections, pneumonia, or septicaemia (infections getting into the bloodstream) can result in life-threatening illness or, on rare occasions, death, if left untreated. Those with weakened immune systems and chronic illnesses are more susceptible to developing an infection (1).

Penicillin disrupts the cross-linking of small peptide chains in peptidoglycans during the production of bacterial cell walls. (2) As a result, pre-existing cells are unaffected, but newly produced bacteria are unable to maintain their cell-wall rigidity and ultimately undergo lysis. Within ten years of the widespread use of penicillin, *Staph. aureus* had developed resistance by producing penicillinase, an enzyme which cleaves the penicillin beta-lactam ring. To combat this resistance, a semisynthetic class of penicillins (e.g. methicillin) was introduced in the 1960s. Methicillin had an additional acyl-group on the beta-lactam ring which conferred a high degree of resistance to penicillinase and produced broader antibacterial activity against some Gram-negative bacteria. Methicillin resistance developed in *Staph. aureus* at a slower pace than the initial resistance to penicillin (3). Penicillin and its derivatives, including methicillin have been used for the treatments of infections caused by *S. aureus* (4). Less than 90% of *S. aureus* strains are

resistant to most penicillin derivatives (3,5) and ordinary antimicrobial agents like drugs from the family of aminoglycosides, macrolides, chloramphenicols, tetracyclines and fluoroquinolones(6).

Expression of an alternative penicillin-binding protein, PBP2a conferred resistance and rendered the entire antibiotic class ineffective. This is encoded on the methicillin-resistance gene *mec A*, which is a component of a highly mobile genetic element known as the *staphylococcal* cassette chromosome (SCC) (7,8). MRSA isolates from hospital settings has been gradually increasing in the United States and other parts of the world. Depending on the study area and sample size, high rate of MRSA rates (>50%) have been reported in USA, Asia and Malta, intermediate rate (25-50%) reported in Africa, China and Europe while in some part of Europe, the prevalence rate is relatively lower than 50% (9).

The prevalence rates of HA-MRSA in some European countries like France, Ireland and UK and reported decline in hospital cases. While in Asia particularly South Korea (77.6%), Vietnam (74.1%), Taiwan (65%) and Hong Kong (56.8%) reports on HA-MRSA infections is still high. (10).

Many author found that the incidence of MRSA among *S. aureus* was 94.3%. (11), 88 % (12), 83.7% (13) and 65% (14).

Another study done in Basra university, Nursing college by (15) stated that 17 (65 %) from 26 isolates were MRSA..

Animals such as dogs, cats and horses have become an important part of most families particularly in developed countries like USA and UK (16). In the UK, 1.5% of MRSA were recovered from samples of infected companion animals (17) and dogs are more infected/colonized with MRSA in

comparism to cats (18). Reports of MRSA colonization in horses with a percentage rate of 0 to 11% has been published (19). Most cases and outbreak of MRSA infections were reported in large stables and post-operative complications (18,20).

During the last 30 years, no new classes of antibiotics have been found, even with the help of modern biotechnology such as genetic engineering. Pharmaceutical companies have mainly focused on the development of new products derived from the known classes of antibiotics (21) which is a cause of major concern. Thus, exploring alternative approaches to develop antibacterial products is also a worthwhile task, and re-examining the potential of promising older methods might be of value. One of the possible replacements for antibiotics is the use of bacteriophages or simply phages as antimicrobial agents (22,23).

Phage therapy involves the use of lytic phages for the treatment of bacterial infections, especially those caused by antibiotic resistant bacteria. In general, there are two major types of phages, lytic and lysogenic. Only the lytic phages (also known as virulent phages) are a good choice for developing therapeutic phage preparations (24,25). The bactericidal ability of phages has been used to treat human infections for years as a complement or alternative to antibiotic therapy (26,27,28).

Bacteriophages, nature's tiniest viruses and it is estimated that there are about 1031 phages on earth making viruses the most

abundant life form on earth (29,30,31). Bacteriophages do not only help in the treatments of bacterial infections in animals and human beings but also used in birds, fishes, plants, food material and biofilm eradication (32,33,34,35,36).

Materials And Methods

Isolation and identification of *S. aureus*

50 samples of pus were taken from patient suffering from post-traumatic bone infection. All patient who were suspected to had *Staphylococcal* infections. Culture specimens were obtained at the time of admission, after the surface of the wound had been washed vigorously by saline, and followed by debridement of superficial exudates. Pus was collected by sterile syringe. Specimens were promptly took to the laboratory and processed. Standard methods for isolation and identification of *S. aureus* were used. (37) table (1).

Detection of Methicillin Resistance *Staphylococcus aureus* by using Cefoxitin, methicillin and penicillin G Disc Diffusion (D.D.) method

The isolates of *S. aureus* were subjected to cefoxitin, methicillin and penicillin G Discs (Bioanalyse, Turkey), using a 30 µg, 10 µg and 10 U disc respectively. A 0.5 McFarland standard suspension of the isolate was made and lawn culture was done on Muller-Hinton agar, (Oxoid-England) plate. Plates were incubated at 37°C for 18 hr. and zone diameters were measured table (2). (38,39).

Table 1. Morphological and biochemical tests to *S. aureus*.

Bacterial spp.	Morphological examination	Biochemical tests
<i>Staphylococcus aureus</i>	Gram stain •	Mannitol salt agar •
	Staph 110 agar •	Catalase test •
	Blood agar •	Coagulase test •
	Motility test •	Oxidase test •

Table 2. Antimicrobial susceptibility testing standards. (EUCAST, 2009; CLSI, 2012).

ANTIBIOTIC DISCS	Disc concentration	Diameter of inhibition zone (mm)		
		Interpretive criteria		
		Resistant (R)	Intermediate (I)	Sensitive (S)
Cefoxitin	30 µg	≤ 21	-	≥ 22
Methicillin	10 µg	≤ 9	10-13	≥ 14
Penicillin G	10 U	≤ 28	-	≥ 29

Isolation and purification of *staph aureus* bacteriophage

Sample collection

The methods used adapted from (40,41). 45 ml raw sewage was measured into graduated cylinder, the sample centrifuged at 3500 rpm for 15 min, the supernatant is filtered through 0.22 µm Millipore filter and decanted into Erlenmeyer flask and pipette 5 ml double sterile phosphate buffer saline and 5 ml *staph aureus* suspension (1.5×10^8 cfu/ml), then incubated at 37° C for 24 hours.

Phage isolation

Isolation of phage and seeding by using agar overlay technique (42). Sewage and *staph aureus* culture distributed into 8 centrifuge tubes and centrifuged the sample at 2000 RPM for 5 minute. Most of the remaining cells was pelleted. The supernatant contains bacteriophage pipetted into a Millipore filter (0.22 µm) and until all the liquid is pulled into the container, then 0.1 ml of filtrate and 0.1 ml of *S. aureus* added to 3 ml of top agar, then mixed and poured over a plate of bottom agar, the plate allowed to be harden, invert the plate and incubate at 37°C for 24 hours and then phage plaque detected. Top and Bottom agars were prepared according to (43).

Preparation, standardization of phage suspension stock and Storage of bacteriophage

When plaques were identified, a pure suspension is prepared by carefully removing a portion of the phage single plaque on bottom agar plate by stabbing the center of a plaque with a sterile needle. Rinse in 10 ml sterile TSB (Tryptic Soya Broth, Hi-media-India), the broth is transferred to a sterile 25 ml centrifuge tube and centrifuging at 5000 rpm for 5 min. The supernatant filter through 0.22 microfilter and then aseptically transferred to a sterile 15 ml tube and stored at 4°C till use. (42,44).

Measurement of phage titer PFU/ml by using phage plaque assay.

Ten-fold serial dilutions to 10^{-9} of phage filtrate made in PBS. 3 ml of hot, melted top agar into three 13x100 mm test tubes held in 47 °C water bath. To each tube of 47 °C top agar, 0.1 ml of *S. aureus* added and 0.1 ml of the 10^8 phage dilution quickly pipetted into a tube of top agar containing host bacteria, mix well but gently to avoid bubbles and quickly pour the mixture onto the surface of bottom agar while turning the dish with the left hand, tap out the final drop, the plates rapidly tilted and distributed over the surface of the bottom layer, this procedure was repeated with others phage dilutions. The top agar allow to solidify and become firmly attached to the hard agar bottom, all the plates inverted and incubated for 24 hrs. The phage titer determined by counting the number of plaque forming units (p.f.u.) for each dilution. For determination (dilution

factor) that used for all other experiments. Plate that had between 30 and 300 plaques were counted by applying the following

Determination of phage typing to *S. aureus* by using spot test

The type of phage strain will determine using an isolate of *S. aureus*. Two microliters of concentrated phage lysate (10^8 PFU/ml) then dropped onto a NA (Nutrient agar, Oxoid-England), plate overlaid with *S. aureus* and incubate overnight. The lytic ability of phage isolates assessed using the clarity of plaques. (46).

Study the effect of temperature and pH on the infectivity of phage

pH values of 2, 7.4 and 8 were used to determine whether the bacteriophages are affected by exposure to different pH values. The values were chosen in accordance with the range of pH (2-8) obtained in Rabbit GIT. Triplicate tubes are prepare with 9.9 ml of different buffer solution; buffer A pH=2 (50 ml of 0.2M KCL + 13 ml of 0.2M HCL), buffer B pH=7.4 (100 ml of 0.1M KH_2PO_4 + 78.2 ml of 0.1M NaOH) and buffer C pH=8 (100 ml of 0.1M KH_2PO_4 + 93.4 ml of 0.1M NaOH) (BDH, England) will add to a total volume of 10 ml (0.1 ml of 3×10^8 phage). Then, 0.1 ml samples were taken with regular intervals (sampling begins at the first 1 h, 6h, and 12h) and added *S. aureus* culture. Plaque assays were performed for each sample to register the change in abundance of infectious phages over time.

Optimal phage dilution prepares using saline and placed in a 40°C , 50°C and 60°C water bath and 37°C as a control. 0.1 ml of phage dilution then remove after 10, 20, 30, 40, 50, and 60 min had elapsed and added to sloppy agar previously inoculated with staph aureus culture then plated on NA and incubated overnight at each temperature the number of p.f.u. were determined for each time interval. (47,48).

formula (45). Phage titer = number of plaques / dilution factor X plating amount

Determination the Minimum Inhibitory Concentration of bacteriophage against MRSA Using Tube dilution tetrazolium assay (TTA)

The MICs of phages was determined by using the tetrazolium salt in the tube dilution assay and this method was modified from (49), standard bacterial suspension (1.5×10^8 cfu/ml) adjusted to 0.5 McFarland tube was added to the 9 tubes containing 6 ml nutrient broth. The phage preparations were diluted to contain different concentration of phages, (Ranging from 10^{-1} to 10^{-9}) PFU/ml, and 1 ml of phage dilutions were added to all tubes containing bacterial cells. Corresponding cell control, phage control and media control were maintained. After 24 h incubation 35°C without shaking to visually differentiate between the live and dead cells, 200 μL of TTA reagent was added to each tube and observed for color development after 2 hr. The lowest concentration of phage at which no color was seen was regarded as the MIC.

Statistical Analysis

Data were analyzed statistically using the Microsoft Program, SAS (Statistical Analysis System - version 9.1). Statistical analysis of data was performed on the basis of Two-Way Analysis of Variance (ANOVA) using a significant level of ($P < 0.05$). post hoc test was performed to assess significant difference among means (50).

Results

Isolation and identification of the *Staphylococcus aureus*

The results of isolation and culturing of bacteria including biochemical tests showed that a total of 50 pus samples which were collected from patients suffering from post-traumatic bone infection, 42 samples,

showed positive results for the presence of *Staphylococcus aureus*. Table (3).

Table 3. Prevalence of *Staphylococcus aureus* from the collected samples.

Bacteria	No. of samples	Percentage %
<i>Staphylococcus aureus</i>	42	84 %
Other	8	16 %
Total	50	100 %

Morphological examination and culture characteristics

The suspected bacteria was cultured on Blood agar, Mannitol salt agar and Staph 110 and after purification of bacteria, biochemical tests (Catalase, Coagulase, and Oxidase tests) were done as well as gram staining was performed, 42 samples, showed positive results for the presence of *Staphylococcus aureus*. Results showed in table (4), (5). and figures (1).

Table 4. Morphological tests used to identify *Staphylococcus aureus*.

morphological tests	Results
Gram stain	G +ve cocci
Staph 110 agar	Creamy to yellow or orange colonies
Blood agar	Golden yellow, round, smooth colonies. β -Hemolysis

Table 5. Biochemical tests used to identify *Staphylococcus aureus*.

Biochemical tests	Results
Mannitol salt agar	Conversion of medium from rosy to yellow
Catalase test	Formation of gas bubble
Coagulase Test (Slide method)	Clumping appeared
Oxidase test	(no purple color appeared), negative result

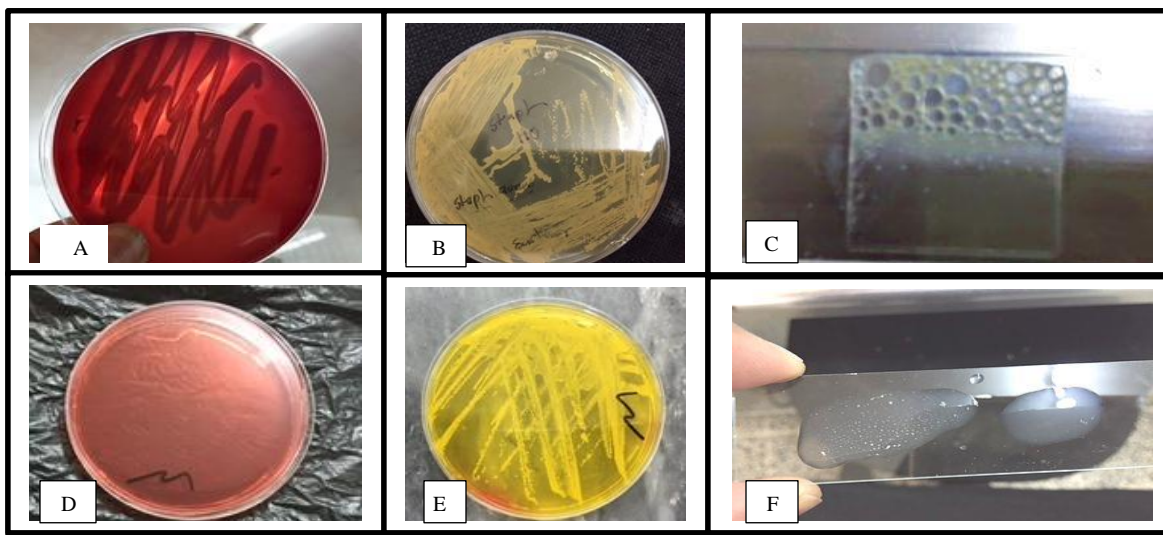


Figure 1. A. Staph aureus on blood agar (β – Hemolysis)

B. Staph aureus on Staph 110 agar (Creamy to yellow or orange).

C- Positive catalase test

D. Mannitol salt agar without *S. aureus* culture. **E.** Fermentation of mannitol salt agar by

F. Positive coagulase test

S. aureus. (Formation of yellow

Detection of Methicillin resistance *Staphylococcus aureus* by using Disc diffusion method.

After the identification of *S. aureus*, susceptibility test was done for all *S. aureus* isolates by disk diffusion method to detect the presence of MRSA, figure (2), according to National Committee for Clinical Laboratory Standards guidelines recommendation. (NCCLS), as shown in table (6). Results of antibacterial sensitivity test of *Staphylococcus aureus* shown that all isolates were resistance to penicillin 100%, this may explain why *S. aureus* is totally resistant to penicillin G. Also it was found that 92.85 % were resistant to cefoxitin and 95.23 % of *S. aureus* were resistant to methicillin.

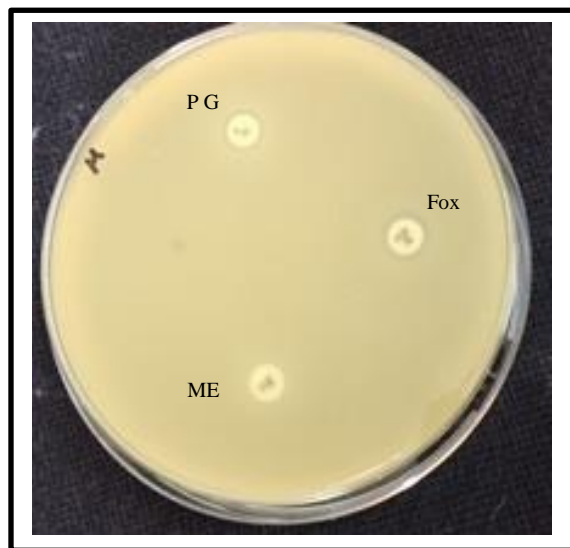


Figure 2. Antibiotic sensitivity of *S. aureus* showed MRSA

Table 6. Antibiotic sensitivity test of *S. aureus*

Bacteria \ Antibiotic discs	Staphylococcus aureus (n= 42)					
	R		I		S	
	No	%	No	%	No	%
Cefoxitin 30 µg	39	92.85	-	-	3	7.15
Methicillin 10 µg	40	95.23	-	-	2	4.77
Penicillin G 10 U	42	100	-	-	-	-

Isolation and purification of *staphylococcus aureus* - specific bacteriophage.

Phage isolation

Staph aureus specific- Bacteriophage associated with osteomyelitis which had been separated from sewage water near to the hospital Lab and surgery theater through agar method. Phage were able to lyse bacteria and form plaques after incubation 24 hr at 37 C°. A piece of single plaque of phage on the bottom agar were picked by sterile needle. put in broth for 3 hrs and re-infect the host to confirm obtaining phage, figure (3).

Plaque morphology

Plaques were formed as clear circular with a size ranged between 2-3 mm in diameter when incubated at 37 C° for 24 hrs,

Preparation of phage stock and titration.

over lay technique was used to prepared of *Staph aureus* phage stock solution and a titer between 10^1 to 10^9 PFU/ml was made.

Calculation of phage titer by using Series of dilutions were used to calculation

of phage titer and the p.f.u. for each dilution are (5.8×10^4 , 5.4×10^5 , 4.3×10^6 , 4.0×10^7 , 3.0×10^8 , 2.5×10^9 , 2.1×10^{10} , 1.8×10^{11} and 1.2×10^{12}), respectively. Dilution factor that gave the best countable number of plaques is (10^5), this dilution factor was then used for all other experiments and the pfu/ml was (3×10^8), table (7). In addition the optical density of all dilutions were recorded at the same time.

Determination of host rage (Phage typing).

Specificity of bacteriophage to MRSA was determined by using Spot lysis technique, MRSA are efficiently lysed by specific bacteriophage. Clear lyses zone was formed and bacterial growth inhibited at the point of phage dropped Approving these *Staph. aureus* isolates have particular receptor on its cell wall for phage attachment, figure (4).

Determination the Minimum inhibitory concentration of bacteriophage against MRSA.

The MIC of phage was the dilution 10^{-7} (1.2×10^{10}), figure (4). TTAs basically

depend on reduction of tetrazolium to a reduced substance called formazan in mammalian cells and this test have been used to differentiate between the live and

dead bacterial cell because only live bacteria convert the tetrazolium to purple formazan. We adopted this method to estimate the MIC of phages.

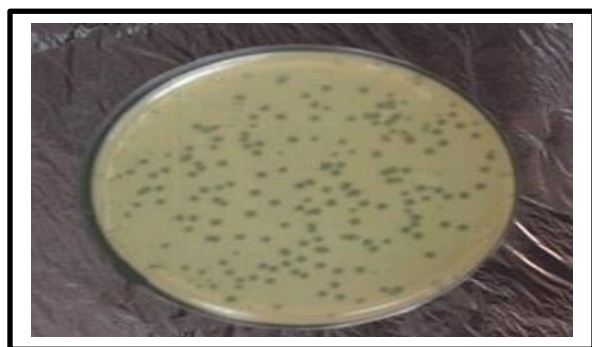


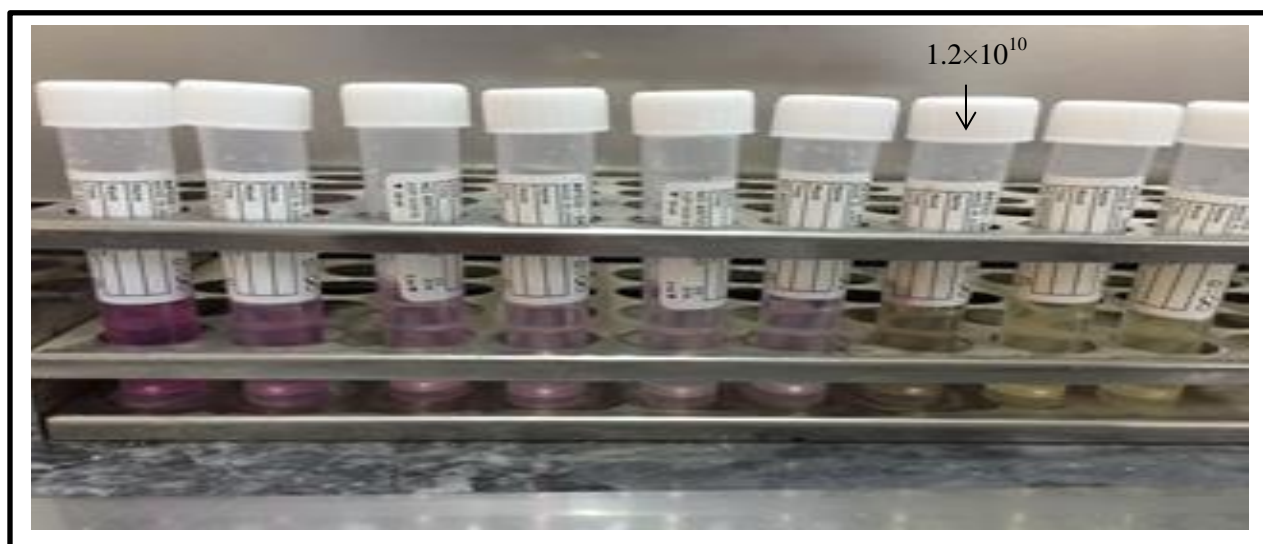
Figure 3. Plaques formed after 24 hr. incubation on MRSA culture.



Figure 4. Spot lysis test after 24 hr. incubation

Table 7. Determination of *S. aureus* phage titer .

Plate NO.	Plaque per plate	Titer calculation = $\text{Plaque} \times \text{DF} / \text{Volume of phage plated (ml)}$	Titer Plaque forming unit
1	580	$580 \times 10^1 / 0.1$	5.8×10^4
2	540	$540 \times 10^2 / 0.1$	5.4×10^5
3	430	$430 \times 10^3 / 0.1$	4.3×10^6
4	400	$400 \times 10^4 / 0.1$	4.0×10^7
5	300	$300 \times 10^5 / 0.1$	3.0×10^8
6	250	$250 \times 10^6 / 0.1$	2.5×10^9
7	210	$210 \times 10^7 / 0.1$	2.1×10^{10}
8	180	$180 \times 10^8 / 0.1$	1.8×10^{11}
9	120	$120 \times 10^9 / 0.1$	1.2×10^{12}



These different values were selected according to the range of pH (2-8) found in Rabbit GIT, result shown in table (8). PFU were measured for every specimen to record the change in the infectivity phages over time in different pH

The aim of this experiment was to test the *staph aureus* specific-bacteriophage degradation and survival in different pH environment that influenced the decay rates of phage and the infectivity of the bacteriophage. There was no significant decrease in bacteriophage infectivity to lyse the bacteria during the 6 hr incubation at pH 7.5 and 8, and the pfu/ml was 2.3×10^8 , mean Log10 (8.36), 2.8×10^8 (8.44), respectively. This is approved that there are no significant differences ($P < 0.05$) between these two pH values during the first 6 hr., but there are a significant differences ($P < 0.05$) between the phage titer at pH 7 and pH8 in comparison with phage titer at pH 2. While the pfu at pH 8 was decrease slightly to 1.0×10^8 after 12 hr. bacteriophage lost its infectivity when incubated at pH 2 between (1hr-6hr) incubation from 0.6×10^8 (6.77 mean Log10) to 0.2×10^8 (6.30 mean Log10) and the pfu became 0.0 after 12 hr incubation at pH 2.

Ideal phage dilution prepared with normal saline and put in graded temperatures 40C°,

50C° and 60 C° and 37C° as a control. 0.1 ml of phage sample were taken after 10min, 20min, 30min, 40min, 50min, and 60min incubation in these temperatures and then overnight culture of staph aureus added. PFU were measured using double layer technique for each time. And phage titer pfu/ml and mean log10 during 10, 20, 30, 40, 50, and 60 minutes was 2.3×10^8 (8.37), 2.8×10^8 (8.44), 3.2×10^8 (8.5), 3.8×10^8 (8.57), 4.3×10^8 (8.68) and 4.8×10^8 (8.68), respectively in the temperature 37 C° and phage titer mean log10 was 1.9×10^8 (8.29), 2.5×10^8 (8.39), 2.8×10^8 (8.44), 2.8×10^8 (8.44), 3.0×10^8 (8.60) and 3.3×10^8 (8.62), respectively in the temperature 40 C°. The phage titer and mean log10 was (1.3×10^8 (8.11), 0.8×10^8 (7.69), 0.0, 0.0, 0.0 and 0.0), respectively in the temperature 50 C°. while the phage titer and mean log10 was (0.0, 0.0, 0.0, 0.0, 0.0 and 0.0), respectively in the temperature 60 C°. Result shown in table (9).

The statistical analysis results showed significant increase ($P < 0.05$) in phage titer in temperature 37 Co and 40 Co comparing with phage titer in temperature 50C° and 60C°. Most of the bacteriophage were sensitive to temperatures above 50°C and inactivated instantly at 60°C. and there are

no significant differences ($P < 0.05$) between phage titer in temperature 37 Co and 40 Co during the 60 minutes. And there was a significant differences between phage titer

in temperature 37 Co and 40 Co during the 60 minutes in comparison with phage titer in temperature 50 Co and 60 Co.

Table 8. Change in infectivity of the Bacteriophage (mean Log_{10} of phage concentration PFU/ml) over time at different pH values.

Time (hr)	Dilution factor	Titer: plaque forming unit (mean Log_{10} PFU/ml) at different pH values		
		pH 2	pH 7.4	pH 8
1	10^5	6.77 ± 0.07 B a	8.25 ± 0.04 A b	8.17 ± 0.06 A b
6	10^5	6.30 ± 0.03 B b	8.36 ± 0.02 A b	8.44 ± 0.07 A a
12	10^5	0.0 ± 0.0 C c	8.5 ± 0.05 A a	8.0 ± 0.02 B c

Values represent mean \pm S.E , LSD = 0.1359

Different capital letters mean significant ($P < 0.05$) results between different pH values.

Different small letters mean significant ($P < 0.05$) results between different hours.

Table 9. Sensitivity determination of *staph aureus* phage titer (mean Log_{10} of phage concentration PFU/ml) in relation to different degrees of temperature.

Time (min)	Dilution factor	Titer: plaque forming unit (mean Log_{10} PFU/ml)			
		37 C°	40 C°	50 C°	60 C°
10	10^5	8.37 ± 0.08 A a	8.29 ± 0.12 A a	8.11 ± 0.13 A a	0.0 ± 0.0 B a
20	10^5	8.44 ± 0.11 A a	8.39 ± 0.15 A a	7.69 ± 0.12 B b	0.0 ± 0.0 C a
30	10^5	8.50 ± 0.09 A a	8.44 ± 0.06 A a	0.0 ± 0.0 B c	0.0 ± 0.0 B a
40	10^5	8.57 ± 0.11 A a	8.44 ± 0.08 A a	0.0 ± 0.0 B c	0.0 ± 0.0 B a
50	10^5	8.68 ± 0.18 A a	8.60 ± 0.05 A a	0.0 ± 0.0 B c	0.0 ± 0.0 B a
60	10^5	8.68 ± 0.13 A a	8.62 ± 0.04 A a	0.0 ± 0.0 B c	0.0 ± 0.0 B a

Values represent mean \pm S.E , LSD = 0.3412

Different capital letters mean significant ($P < 0.05$) results between different temperature.

Different small letters mean significant ($P < 0.05$) results between minutes.

Discussion

Isolation and identification of the *Staphylococcus aureus*

The importance of *Staphylococcus aureus* as a successful pathogen resides in its wide genetic diversity and host range and the different pathologies associated with infection. *S. aureus* is associated with hospital-acquired and community acquired infections and with human carriers (51) as well as livestock associated infections (52), for which meticillin-resistant *S. aureus* (MRSA). and meticillin-sensitive *S. aureus* (MSSA) isolates are important pathogens (53).

In the present study, the identification of *S. aureus* isolates associated with bone infection in hospitals was investigated. Primary isolation and presumptive identification of the pathogen is crucial for microbiological diagnosis and epidemiological surveillance. In order to isolate and identify *S. aureus* a number of authors have used a variety of selective and/or differential culture media. Among the most common media used are salt– mannitol agar (SMA) and *Staphylococcus*-110 agar (S110), which are selective and differential media that take advantage of the tolerance of *S. aureus* to 7.5% (w/v) NaCl as well as its metabolic activities, such as mannitol fermentation in SMA or gelatinase activity in S110 media.

Sheep's blood agar (SBA) is a rich medium in which the β haemolytic activity of *S. aureus* isolates was clearly differentiated. In this current biochemical tests such as catalase, coagulase and oxidase tests used for identification of *S. aureus*.

As the use of differential and/or selective culture media for the isolation and primary identification of *S. aureus* isolates is not enough to ensure the identity of the isolates, a secondary test is needed to precisely identify the isolates as *S. aureus*. Determinations of coagulase and β -

haemolysin activities are easy and affordable confirmatory techniques to identify *S. aureus*. When one or both of these confirmatory tests were used in combination with each selective medium, they improved the ability to correctly identify *S. aureus*.

For SBA, only the combination with coagulase test was presented because the criterion of β -haemolysis has been already considered in the positive colony morphology description, although β -haemolysis was confirmed again after primary isolation. All isolates were β -haemolytic. The use of coagulase at 24 h as a secondary test of identification improved sensitivity and specificity in combination with the respective culture medium. However, SMA and coagulase showed higher values of sensitivity compared with the other culture media. Using β -haemolysis as secondary test of identification also increased sensitivity, specificity when combined with the respective culture medium. Our results is confirmed with the work of (54).

MSA is a selective as well as a differential media. mannitol is the differential part, it indicates organisms that ferment mannitol. If mannitol fermentation is occurring, lactic acid will be produced, and the pH will drop causing the MSA medium to turn from red to yellow (with phenol red as pH indicator). The salt (7.5%) portion is selective for members of the genus *Staphylococcus* (55); since they can tolerate high saline levels. Coagulase-positive *staphylococci* (COPS) will produce luxuriant growth of yellow colonies and may have a yellow halo around the colony. Coagulase-negative *staphylococci* (CONS) will produce small colorless to pink colonies with no color change to the medium (56,57).

Results of antimicrobial susceptibility test of *S. aureus* isolates revealed that all isolate were resistance to penicillin 100%, this may

explain why *S. aureus* is totally resistant to penicillin G which agreed with (58,59,60). The percentage of penicillin G resistant in these studies was 100%, respectively. The present study results were compatible with results of (61); likewise, this results were compatible with those obtained by (62) as they observed that all isolates were resistant to penicillin and other β -lactam antibiotics.

It was found that 92.85 % were resistant to cefoxitin and also 95.23 % of *S. aureus* were resistant to methicillin. this result is close to work of (63) and (64).

Infections due to MRSA are an increasing problem worldwide inside and outside of hospitals, it is clinically and epidemiologically important for laboratories to be able to differentiate MRSA from MSSA. Not only for choosing appropriate antibiotic therapy for the individual patient, but also for control of MRSA transmission (65). Several groups of investigators have reported that the results of cefoxitin disk diffusion (DD) tests correlate better with the presence of *mecA* than do the results of disk diffusion tests using oxacillin (66). Using cefoxitin and CLSI criteria for disc diffusion, the sensitivity and specificity for recognizing methicillin resistance were both 100 % (67).

Cefoxitin and moxalactam have been reported as surrogate markers for the detection of methicillin resistance.(68,69). The NCCLS has recently reported cefoxitin zone diameter interpretive criteria for the prediction of *mecA*-mediated resistance. (70).

Isolation and purification of *Staphylococcus aureus* - specific bacteriophage.

Phage isolation and phage morphology

The common gold standard method for enumerating and differentiating phages is

the double agar overlay assay. Therefore this current study are in agreement with (71) in possibility of isolation of phage from sewage by using double agar overlay assay.

Author emphasized the ubiquitous nature of phage populations, although bacteriophage counts can only rise after an increase in host bacteria population. (72).

In studies involving dairy livestock, milk and udders were primary sources for samples from which phages were isolated (73,74,75,76,77). Alternate sources from which phages could be isolated include sewage or wastewater (78), and feces (72,79,80).

Plaques were formed as clear circular with a size ranged between 2-3 mm in diameter when incubated at 37 Co for 24 hrs. This result agreed with (81,82) due to lyses of the bacterial host (MRSA). Sewage water was observed to be the best environmental source to get lytic phages with aggressive infective qualities; this might be attributed to the fact that phages from sewage tolerate hard conditions in the sewage; thus, these phages show high degree of lysis with high tolerance to harsh physical environment. Therefore, lytic phages from sewage showed larger plaques, higher titers, and clearer plaques than others.

This is in agreement with (83). Who they report that the different sources of phages' isolation and the finding that each phage showed unique profile of size, shape, clarity, and margin cut of plaques provided preliminary evidence that isolated phages are unique and no phages are identical to each other.

Preparation of phage stock and titration.

Agar overlay method was used for preparation of *S. aureus* phage stocks and obtain a titer between 10^1 to 10^9 PFU/ml. this result was in agreement with (84).

Which is achieved a titer in excess of 109 PFU/ml.

From our results, the dilution factor gave the best countable number of plaques was (10^5), this dilution factor was then used for all other experiments. In addition the optical density of all dilutions were recorded at the same time.

The presence of these zones of clearing indicated that is, amplifying bacteriophage from a raw sewage sample and inoculating the phage into *S. aureus* host was an effective way of isolating and visualizing phage. Amplify (increase the numbers) of **Determination of host range (Phage typing).**

Spot test was used to determine the type of bacteriophage, MRSA isolates were successfully lysed by phage, forming a clear lyses zone and inhibition bacterial growth at the site of phage dropped. Approving these *S. aureus* isolates have specific receptor on its cell wall enabling phage to be attach, this is an agreement with (42,82). Which showed relatively wide spectrum host prophylaxis or treatment of *S. aureus* associated with osteomyelitis.

The specificity of phages for bacterial cells enables them to be used for the typing of bacterial strains and the detection of pathogenic bacteria. Phage typing is also known as the use of sensitivity patterns to specific phages for precisely identifying the microbial strains. For the detection of unknown bacterial strain its lawn is provided with different phages, and if the plaque (clear zones) appears then it means that the phage has grown and lysed the bacterial cell, making it easy to identify the specific bacterial strain (86).

Phage can be isolated from a wide variety of source such as sea water, sewage water/sludge, ect. These phage feed mainly on locally available organisms and cell. They have an added advantage in that they

phages in the sewage sample by allowing them to infect and reproduce within fresh *S. aureus*, The infection then “spread” as the viruses reproduced and cells lyses, eventually forming a visible plaque the titer of a phage suspension, therefore, is determined by counting the number of plaques that form from a given volume of suspension. Phage titer is expressed as plaque forming units (PFU) per milliliter (ml), it was also determined at this stage which dilution factor gave the best countable number of plaques (85).

are host specific and evolve a long with the host.

The development of clear zones of lysis against *S. aureus* using specific phage lysate indicated that the phage we obtained in this experiment were lytic phage. Therefore this current study focused on the isolation of bacteriophage effective against MRSA, the main causative agent of osteomyelitis. Our results were in agreement with (87), who determined the host range of the bacteriophage by (spot test) and they found that each of the tree virulent phages was able to independently lyse the original host bacterium.

Determination the Minimum inhibitory concentration of bacteriophage against MRSA.

Tube dilution tetrazolium assays (TTAs) have been used to probe the relationships between the cell survival, growth and differentiation that rely on the cellular reduction of tetrazolium salts to their intensely colored formazans in mammalian cells (88,89). This reagent has also been used effectively to differentiate between live and dead bacteria because only live bacteria convert the dye into an insoluble purple formazan measured at 560 nm (90). We adopted this method of quantifying dead bacteria by TT assay to estimate the MIC of

phages. This adapted procedure is done for the first time in Iraq.

Antibiotic resistance amongst bacterial pathogens is a cause of widespread concern. Despite continuous and vigorous efforts, the discovery of new antibacterial has not kept pace with the requirements of the medical profession. Bacteriophage therapy, all but forgotten in the wake of the antibiotic era, has been attracting the attention of many research groups (21) and efforts are being made to develop this naturally occurring agent into a preventive or therapeutic product. Virulent phages appear to be somewhat similar to antibiotics because they display remarkable antibacterial activity. Recent reports on the effects that such agents and their derivatives (91,92,93) have on antibiotic resistant strains suggest a significant clinical advantage. Because a phage is a complex molecule and does not diffuse like an antibiotic, it is not possible to use a test similar to the disc diffusion test for this particular purpose.

In this study, we examined whether a test similar to the determination of minimum inhibitory concentration can be applied to phage preparations so that clinical laboratories might test the sensitivity of clinical isolates to identify the causative organism and future courses of action and treatment. Therefore, it is important to

Study the effect of temperature and pH on the infectivity of phage.

pH values of 2, 7.4 and 8 were used to determine whether the bacteriophage are affected by exposure to different pH values. The values were chosen in accordance with the range of pH (2-8) obtained in Rabbit GIT. Plaque assays were performed on every sample to register the change in abundance of infectious phages over time.

The impact of bacteriophage treatment of bacterial pathogens in infected rabbits

determine their concentrations quickly and reliably, and the proposed MIC method appears to be both reliable, and reproducible.

This method is laborious and time consuming, and the proposed MIC method appears to be an interesting alternative. In addition, one of the main factors affecting plaque formation is the density of the indicator cells on the plates, because a very dense confluent lawn would affect infection by phage, resulting in very small plaques (94). None of these factors affect the MIC method of detecting phage adsorption, which is novel, time-saving, easy and could even be applied to mammalian viruses for titer estimation. (95). The TTA colorimetric bactericidal assays have been shown to produce comparable results with *S. aureus*, *Salmonella*, *E. coli* and *Klebsiella* (49), supporting our observations regarding the applicability of this dye in measuring viability in MRSA. The MIC test can be conducted manually or it can be completely automated, depending on particular lab situations to handle several samples simultaneously. The MIC method could prove very useful in the diagnosis of bacterial strains through phage typing, and the results of this study determine the presence of prophages in any bacterial host, which is both novel and interesting.

depends on the ability of the phages to reach the target organs at sufficient density and lytic potential to control the pathogen. Numerous factors affect the survival and lytic properties of the phages administered to the rabbits, e.g., delivery mechanism, multiplicity of infection, animals immune response, physical and chemical environment, and development of phage-resistant bacteria. However, little is known about the fate of bacteriophages after addition to infected rabbits.

The aim of this experiment was to examine the regulation of bacteriophage survival/decay in controlled laboratory experiments at various environmental pH that influenced the decay rates of phage and the infectivity of the bacteriophage.

Our results in agreement with (96), which they approved that some phage can be stored for a long period in neutral pH (6-8). This experiments testing the pH tolerance of the bacteriophages confirmed that the pH was very important for the infectivity of the phages.

The effect of temperature on the infectivity of phage was also evaluated. The temperature at which a phage loses viability is called thermal inactivation temperature. This loss of viability has been shown to result from disruption of head proteins and the subsequent release of DNA, and the alteration of phage binding receptors (adsorption sites). (97). These results were in agreement to (47).

Conclusion

References

1. **Provincial Infection Control Network of British Columbia (PICNet). (2016).** Methicillin-resistant *Staphylococcus aureus* (MRSA) Update. Q2 of Fiscal Year 2015.
2. **Anonymous (2012).** Effects of antibiotics on animal feed. Available at:
<http://www.udel.edu/chem/C465/senior/fall97/feed/present.html> accessed on 29/11/2012.
3. **Chambers HF (2001).** The changing epidemiology of *Staphylococcus aureus*? *Emerg Infect Dis*; 7 (2). Pp: 178-182.
4. **Rayner C and Munckhof WJ (2005).** Antibiotics currently used in the treatment of infections caused by *Staphylococcus aureus*. *Intern. Med. J.* 35 (2), Pp: 3-16.
5. **Freeman-Cook L and Freeman-Cook K (2006).** *Staphylococcus aureus* infections. Chelsea house publishers, USA.
6. **Lee JH (2003).** Methicillin (Oxacillin)-resistant *Staphylococcus aureus* strains isolated from major food animals and their potential transmission to humans. *Appl. Environ. Microbiol.* 69 (11), Pp: 6489-6494.
7. **Enright MC, Robinson DA, Randle G, Feil EJ, Grundmann H and Spratt BG (2002).** The evolutionary history of methicillin-resistant *Staphylococcus*

S. aureus was the most frequent isolated bacteria from bone infection in all age patients . Sewage water was observed to be the best environmental source to get lytic phages with aggressive infective qualities and the isolated phages show high degree of lysis with high tolerance to harsh physical environment such as pH and temperatures in vitro. The Tube dilution tetrazolium assays (TTAs) have been used first time in country to estimate the MIC of bacteriophage and it appears to be both reliable, and reproducible. This method is laborious and time consuming, and the proposed MIC method appears to be an interesting alternative.

Acknowledge

Authors acknowledge to the Department of Physiology and Pharmacology and Surgery, College of Veterinary Medicine, Baghdad University, Baghdad, Iraq.

- aureus (MRSA). *Proc Natl Acad Sci USA.*, 99 (11). Pp: 7687-7692
8. **Wielders, C. L. C. A. C. Fluit, S. Brisse, J. Verhoef, and F. J. Schmitz (2002).** *mecA* Gene Is Widely Disseminated in *Staphylococcus aureus* Population. *J. Clin. Microbiol.* 40 (11), Pp: 3970-3975.
 9. **Mejía C, Zurita J and Guzmán-Blanco M. (2010).** Epidemiology and surveillance of methicillin-resistant *Staphylococcus aureus* in Latin America. *Braz. J. Infect. Dis.* 14 (2). Pp: 79-86.
 10. **Stefani S, Chung DR, Lindsay JA, Friedrich AW, Kearns AM, Westh H, MacKenzie FM (2012).** Methicillin-resistant *Staphylococcus aureus* (MRSA): global epidemiology and harmonisation of typing methods, *Int J Antimicrob Agents.* 39 (4). Pp: 273-282.
 11. **Al-Dahbi, A. M. and Al-Mathkhury, H. J. (2013).** Distribution of methicillin resistant *Staphylococcus aureus* in Iraqi patients and healthcare worker. *Iraqi J.Sci.* 54 (2), Pp: 293-300.
 12. **Babakir-Mina, M., Othman N. , Najmuldeen, H. H. , Noori, C. K. , Fatah C.F. , Perno, C. and Ciotti, M (2012).** Antibiotic susceptibility of vancomycin and nitrofurantoin in *Staphylococcus aureus* isolated from burnt patients in Sulaimaniyah, Iraqi Kurdistan. *New Micro.* 35 (4). Pp: 439-446.
 13. **Al-Hasani, H. M. (2005).** Comparative Study between methicillin-resistant coagulase positive and negative *Staphylococci*. M.Sc. Thesis, College of Science, University of Baghdad, Baghdad, Iraq.
 14. **Muhammad H. A. Omer and Al-Mathkhury H. Jabbar. (2014).** The Prevalence of methicillin resistant *Staphylococcus aureus* and methicillin resistant *Staphylococcus epidermidis* in AL-Sulaimania city. *Iraqi Journal of Science.*, 55 (2), Pp: 386-393.
 15. **Al-Mussawi, Abdulameer A. (2014).** Detection of *Staphylococcus Aureus* And Methicillin Resistant *Staphylococcus Aureus* (MRSA) From Human Clinical Specimens Using Conventional Biochemical Tests And Chromogenic Media. *Ind. J. of Appl. Res.* 4 (2), pp: 7-9.
 16. **Chomel BB and Sun B (2011).** Zoonoses in the Bedroom, *Emerg. Infect. Dis.* 17 (2). Pp: 167-172.
 17. **Rich M, Roberts L (2004).** Methicillin-resistant *Staphylococcus aureus* isolates from companion animals. *Vet. Rec.* 154 (10), Pp: 310.
 18. **Morgan M (2008).** Methicillin resistant *Staphylococcus aureus* and animals: zoonosis or humanosis? *J. Antimicrob. Chemother.* 62 (6). Pp:1181-1187.
 19. **Loeffler A, Pfeiffer DU, Lindsay JA, Magalhaes RJ and Lloyd DH (2011).** Prevalence of and risk factors for MRSA carriage in companion animals: a survey of dogs, cats and horses. *Epidemiol. Infect.* 139 (7). Pp: 1091-1028.
 20. **Weese JS, Archambault M, Willey BM, Hearn P, Kreiswirth BN, Said-Salim B, McGeer A, Likhoshvay Y, Prescott JF and Low DE. (2005).** Methicillin-resistant *Staphylococcus aureus* in horses and horse personnel, 2000-2002. *Emerg Infect Dis.*;11(3), Pp: 430-435.
 21. **Sulakvelidze A., Z. Alavidze and G. J. Morris Jr., (2001).** Bacte-

- riophage Therapy,” *Antimicrobial Agents and Chemo-therapy*, 45 (3). Pp: 649-659.
22. **Shasha, S.M.; Sharon, N. and Inbar, M. (2004).** Bacteriophages as antibacterial agents. *Harefuah*, 143 (2), Pp: 121–125.
23. **Vinodkumar, C.S.; Kalsurmath, S. and Neelagund Y.F. (2008).** Utility of lytic bacteriophage in the treatment of multidrug-resistant *Pseudomonas aeruginosa* septicemia in mice. *Indian Journal of Pathology and Microbiology*, 5 (3), pp: 360–366.
24. **Sandeep, K. (2006).** Bacteriophage precision drug against bacterial infections. *Current Science*, 90 (5), Pp: 361–363.
25. **Borysowski J. and Gorski A. (2008).** Is phage therapy acceptable in the immunocompromised host?. *International Journal of Infectious diseases*, 12 (5). Pp: 466–471.
26. **Alisky J., Iczkowski K., Rapoport A. and Troitsky N. (1998).** Bacteriophages show promise as antimicrobial agents. *J. Infect.*, 36 (1), Pp 5-15.
27. **Matsuzaki S., Rashel M., Uchiyama J., Ujihara T., Kuroda M., Ikeuchi M., Fujieda M., Wakiguchi J. and Imai S. (2005).** Bacteriophage therapy: a revitalized therapy against bacterial infectious diseases. *Journal of Infection and Chemotherapy*, 11 (5), Pp: 211–219.
28. **Kysela D.T. and Turner P.E. (2007).** Optimal bacteriophage mutation rates for phage therapy. *Journal of Theoretical Biology*, 249 (3), Pp: 411–421.
29. **Ashelford K.E., Norris S.J., Fry J.C., Bailey M.J. and Day M.J. (2000).** Seasonal population dynamics and interactions of competing bacteriophages and their host in the rhizosphere. *Applied Environmental Microbiology*, 66 (10), Pp: 4193–4199.
30. **Hendrix, R.W. (2002).** Bacteriophages: evolution of the majority. *Theoretical Population Biology*, 61 (4), Pp: 471–480.
31. **Dabrowska K., Swita a-Jelen K., Opolski A., Weber-Dabrowska B. and Gorski A. (2005).** Bacteriophage penetration in vertebrates. *Journal of Applied Microbiology*, 98 (1). Pp: 7-13.
32. **Flaherty, J. E.; Jones, J.B.; Harbaugh, B .K.; Somodi, G .C. and Jackson, L.E. (2000).** Control of bacterial spot on tomato in the greenhouse and field with h-mutant bacteriophages. *Bioscience*, 35. Pp :882–888.
33. **Goode, D.; Allen, V.M. and Barrow, P.A. (2003).** Reduction of Experimental Salmonella and Campylobacter Contamination of Chicken Skin by Application of Lytic Bacteriophages. *Applied and Environmental Microbiology*, 69. Pp: 5032-5036.
34. **Leverentz, B.; Conway, W. S.; Camp, M. J.; Janisiewicz, W. J.; Abuladze, T., Yang, M.; Levison M. E and J. H. Levison, (2009).** Pharmacokinetics and pharmacodynamics of antibacterial agents,” *Infectious Disease Clinics of North America*, 23 (4) Pp: 791–815.
35. **Park, S.C. and Nakai, T. (2003).** Bacteriophage control of *Pseudomonas plecoglossicida* infection in ayu *Plecoglossus altivelis*. *Diseases of Aquatic Organisms*, 53, pp: 33–39.
36. **Curtin J. J. and Donlan, R.M. (2006).** Using bacteriophages to

- reduce formation of catheter associated biofilms by *Staphylococcus epidermidis*. *Antimicrobial Agents and Chemotherapy*, 50 (4). Pp :1268–1275.
37. **Sowmya N, S. Savitha, Swapna Mallure, K. Mohanakrishnan, G. Sumathi and P. Arumugam (2014).** A two year study of spectrum of bacterial isolates from wound infections by aerobic culture and their antibiotic pattern in a tertiary care center. *Int.J.Curr.Microbiol.App.Sci.* 3 (8). Pp: 292-295.
38. **EUCAST.** (2009). Breakpoint tables for interpretation of MICs and zone diameters. The European Committee on Antimicrobial Susceptibility Testing.
http://www.eucast.org/fileadmin/src/media/PDFs/EUCAST_files/Disk_test_documents/EUCAST_breakpoints_v1.0_20091221.pdf.
39. **Clinical Laboratory Standards Institute (CLSI).** (2012). Performance Standards for Antimicrobial Susceptibility Testing; Twenty-second Informational Supplement. CLSI document M100-S22. CLSI, Wayne. PA.
40. **U.S. Environmental Protection Agency's (EPA). U.S. EPA.** (2001). Method 1601: Male-specific (F+) and Somatic Coliphage in Water by Two-Step Enrichment Procedure. EPA- 821-R-01-030. Washington D. C: Office of Water
41. **Jaime M. and Tiffany F.** (2003). Isolation of E coli Bacteriophage. *Phage method* .2. Pp: 266-276
42. **Dias, R. S.; Eller, M. R.; Duarte, V. S.; Pereira, Â. L.; Silva, C. C.; Mantovani, H. C.; Oliveira, L. L.; Silva, E. de A. M. and Paula, S. O. D.** (2013). Use of phages against antibiotic-resistant *Staphylococcus aureus* isolated from bovine. *J. Anim. Sci.*, 91 (8). Pp: 3930-3939
43. **Sanders E. R.** (2012). Aseptic Laboratory Techniques: Plating Methods. Microbiology, Immunology, and Molecular Genetics, University of California, Los Angeles.
44. **Maier, M.R.; Pepper, I.L. and Gerba, C.** (2000). Environmental microbiology academic press. USA. Pp: 491-500.
45. **Anderson, B.; Rashid, M.H.; Carter, C.; Pasternack, G.; Rajanna, C.; Revazishvili, T.; Senecal, A. and Sulakvelidze, A.** (2011). Enumeration of bacteriophage particles comparative analysis of the traditional plaque assay and real-time QPCR- and nanosight-based assays. *Bacteriophage*. 1 (2), Pp: 86-93.
46. **Stenholm AR, Dalsgaard I, Middelboe M.** (2008). Isolation and characterization of bacteriophages infecting the fish pathogen *Flavobacterium psychrophilum*. *Appl. Environ. Microbiol.* 74: 4070–4078
47. **Al-khafaji A.M.** (2012). Identification and Characterization of *staphylococcus aureus* Phage Isolated from Sewage. *AL-Qadisiya Jr. of Vet.Med.Sci.* 11 (1). Pp: 34-41
48. **Madsen Lone, Sif K. Bertelsen, Inger Dalsgaard and Mathias Middelboe.** (2013). Dispersal and Survival of *Flavobacterium psychrophilum* Phages In Vivo in Rainbow Trout and In Vitro under Laboratory Conditions: Implications for Their Use in Phage Therapy.

- Applied and Environmental Microbiology*. 79 (16).Pp: 4853–4861.
49. **Vipra Aradhana, Srividya Narayanamurthy Desai, Raghu Patil Junjappa, Panchali Roy, Nethravathi Poonacha, Pallavi Ravinder, Bharathi Sriram and Sriram Padmanabhan (2013).** Determining the Minimum Inhibitory Concentration of Bacteriophages: Potential Advantages. *Advances in Microbiology*, 3 (2), Pp: 181-190.
50. **SAS. (2012).** Statistical Analysis System, User's Guide. Statistical. Version 9.1th ed. SAS. Inst. Inc. Cary. N.C. USA.
51. **Miller, L. G. and Diep, B. A. (2008).** Clinical practice: colonization, fomites, and virulence: rethinking the pathogenesis of community-associated methicillin-resistant *Staphylococcus aureus* infection. *Clin Infect Dis* 46, 752–760.
52. **Graveland, H., Duim, B., van Duijkeren, E., Heederik, D. and Wagenaar, . A. (2011).** Livestock-associated methicillin-resistant *Staphylococcus aureus* in animals and humans. *Int J Med Microbiol* 301, 630–634.
53. **Hata, E. K., Katsuda, K., Kobayashi, H., Uchida, I., Tanaka, K. and Eguchi, M. (2010).** Genetic variation among *Staphylococcus aureus* strains from bovine milk and their relevance to methicillin-resistant isolates from humans. *J Clin Microbiol*. 48, Pp: 2130–2139.
54. **Bautista-Trujillo G. U., J. L. Solorio-Rivera, I. Rentería-Solórzano, S. I. Carranza-Germán, J. A. Bustos-Martínez, R. I. Arteaga-Garibay, V. M. Baizabal-Aguirre,1 M. Cajero-Juárez, A. Bravo-Patino and J. J. Valdez-Alarcón. (2013).** Performance of culture media for the isolation and identification of *Staphylococcus aureus* from bovine mastitis. *J Med Microbiol*. 62 (3). Pp: 369–376.
55. **Benson, J. H. (2002).** Microbiological Applications: Laboratory Manual in General Microbiology (8th ed). McGraw-Hill Higher Education. New York.
56. **Charles, M.; and Margi, S. (2002).** Laboratory Procedures for Veterinary Technicians, 4th ed. Black Well Scientific publication, Oxford. London . 136.
57. **Jakee, J.; Ata, S.; Nagwa, M.; Bakry, S. A.; Zouelfakar, E. E. and Gad El-Said, W.A. (2008).** Characteristics of *Staphylococcus aureus* strains isolated from human and animal sources. *Am-Euras. J. Agric. Environ. Sci.*, 4 (2). Pp: 221-229.
58. **AL-Jundiy, A. S. (2005).** Immunological Study on TSS-1 toxin extracted from *Staphylococcus aureus* Isolated from infected wounds. Ph. D. thesis. College of Science. AL-Mustansyria University.
59. **Zeidan, I. A. (2005).** Genetic and bacteriologic study to *Staphylococcus aureus* isolated from clinical specimens and resistant to Vancomycin antibiotic. MS.c. thesis. College of Science. Baghdad University.
60. **Al-Geobory, H. A. (2011).** Comparative study between Methicillin resistant *Staphylococcus aureus* (MRSA) and Methicillin sensitive *Staphylococcus aureus* (MSSA), and detect the antimicrobial effects of some plant extracts on them. *M.Sc. thesis*.

College of Science. Baghdad University.Iraq

61. Aghazadeh, M., Rahbar, M. , Monnavar, M. K. and Moghadam, F.S. (2009). Sensitivity Pattern of Methicillin Resistant and Methicillin Sensitive *Staphylococcus aureus* Isolates, Against Several Antibiotics Including Tigecycline in Iran : A hospital Study . *Pak. J. Med. Sci.* 25 (3), Pp: 443-446.
62. Brady, R.A, Leid, J.G., Kofonow, J., Costerton, J.W. and Shirliff, M.E. (2007). Immunoglobulins to surface associated biofilm immunogens provide a novel means of visualization of methicillin-resistant *Staphylococcus aureus* biofilms. *Appl. Environ. Microbiol.* 73(20). Pp: 6612-6619.
63. Kalmus, P.; Aasmäe, B.; Kärssin, A.; Orro, T. and Kask, K. (2011). Udder pathogens and their resistance to antimicrobial agents in airy cows in Estonia. *Acta. Vet. Scand.*, 53: 54.
64. Deresse Daka, Solomon G, and Dawit Yihdego. (2012). Antibiotic-resistance *Staphylococcus aureus* isolated from cow's milk in the Hawassa area, South Ethiopia. *Ann. Clin. Microbiol. Antimicro.*, 11 (26). Pp: 1-6.
65. Boyce, J. M., Cookson, B. and Christiansen, K. Hori S, Vuopio-Varkila J, Kocagöz S, Oztop AY, Vandenbroucke-Grauls CM, Harbarth S and Pittet D (2005). "Meticillin resistant *Staphylococcus aureus*," *Infectious Diseases.*, 5 (10). Pp: 653-663.
66. Swenson J. M., Fred C. Tenover, and the Cefoxitin Disk Study Group. (2005). Results of Disk Diffusion Testing with Cefoxitin Correlate with Presence of *mecA* in *Staphylococcus* spp. *Jour. Clinical microbiology.* 43 (8). Pp: 3813-3823.
67. Fernande C. J., Lorna A. Fernandes and Peter Collignon.(2005). Cefoxitin resistance as a surrogate marker for the detection of methicillin-resistant *Staphylococcus aureus*. *Journal of Antimicrobial Chemotherapy.* 55. Pp: 506-510.
68. Felten, A., Grandry, B., Lagrange, P. H. and Casin, I. (2002). Evaluation of three techniques for detection of low-level methicillin-resistant *Staphylococcus aureus* (MRSA) a disk diffusion method with cefoxitin and moxalactam, the Vitek 2 system, and the MRSA screen latex agglutination test. *Journal of Clinical Microbiology* 40, 2766-2771.
69. Skov, R., Smyth, R., Clausen, M. A. R. Larsen¹, N. Frimodt-Møller, B. Olsson-Liljequist and G. Kahlmeter (2003). Evaluation of a 30mg cefoxitin disc on Iso-Sensitest agar for detection of methicillin-resistant *Staphylococcus aureus*. *Journal of Antimicrobial Chemotherapy* 52, 204-207.
70. NCCLS, (2000). National Committee for Clinical Laboratory Standards. Approved Standard M7-A5: Methods for Dilution Antimicrobial Susceptibility Test for Bacteria that Grow Aerobically, 5th Ed.
71. Mansura S. Mulani, Syed Azhar, Shaikh Azharuddin and Shilpa Tambe.(2015). Harnessing the Power of Bacteriophage for Pathogen Reduction in Wastewater. *Int.J.Curr.Microbiol.App.Sci.* Special Issue-2 152-161.
72. Oot, R. A., R. R. Raya, T. R. Callaway, T. S. Edrington, E. M.

- Kutter, and A. D. Brabban. 2007. Prevalence of *Escherichia coli* O157 and O157:H7-infecting bacteriophages in feedlot cattle feces. *Lett. Appl. Microbiol.* **45**:445–453
73. Brüssow, H., and F. Desiere. (2001). Comparative phage genomics and the evolution of Siphoviridae: insights from dairy phages. *Mol Microbiol.* **39** (2). Pp: 213-222.
74. García, P., C. Madera, B. Martínez, and A. Rodríguez. (2007). Biocontrol of *Staphylococcus aureus* in curd manufacturing processes using bacteriophages. *Int. Dairy J.* **17**. Pp: 1232-1239.
75. García, P., C. Madera, B. Martínez, A. Rodríguez, and J. E. Suárez. (2009). Prevalence of bacteriophages infecting *Staphylococcus aureus* in dairy samples and their potential as biocontrol agents. *J. Dairy Sci.* **92**:3019-3026.
76. Shi, D., Y. Hao, A. Zhang, B. Wulan, and X. Fan. 2010. Antimicrobial resistance of *Staphylococcus aureus* isolated from bovine mastitis in China. *Transbound. Emerg. Dis.* **57**:221-224.
77. Kwiatek, M., S. Parasion, L. Mizak, R. Gryko, M. Bartoszcze, and J. Kocik. (2012) Characterization of a bacteriophage, isolated from a cow with mastitis, that is lytic against *Staphylococcus aureus* strains. *Arch. Virol.* **157**: Pp: 225–234.
78. Yoon, S. J., Y. J. Choi, S. Y. Lee, J. S. Son, S. Y. Jun, and S. H. Kang. (2010). Bacteriophage having killing activity specific to *Staphylococcus aureus*. US patent 8,071,352.
79. Niu, Y. D., T. A. McAllister, Y. Xu, R. P. Johnson, T. P. Stephens, and K. Stanford. 2009. Prevalence and impact of bacteriophages on the presence of *Escherichia coli* O157:H7 in feedlot cattle and their environment. *Appl. Environ. Microbiol.* **75** (5). Pp: 1271- 1278.
80. Santos, T. M., E. C. Ledbetter, L. S. Caixeta, M. L. Bicalho, and R. C. Bicalho. 2011. Isolation and characterization of two bacteriophages with strong in vitro antimicrobial activity against *Pseudomonas aeruginosa* isolated from dogs with ocular infections. *Am. J. Vet. Res.* **72**:1079-1086.
81. Aidan, J. Synnott, Ying Kuang, Miki Kurimoto, Keiko Yamamichi, Hidetomo Iwano and Yasunori Tanji. (2009). Isolation from Sewage Influent and Characterization of Novel *Staphylococcus aureus* Bacteriophages with Wide Host Ranges and Potent Lytic Capabilities. *App. and envi. micobiol.* **75** (13), Pp : 4483–4490.
82. Longping L. and Zhiying Z. (2014). Isolation and characterization of a virulent bacteriophage SPW specific for *Staphylococcus aureus* isolated from bovine mastitis of lactating dairy cattle. *Molecular Biology Reports.*, **41**: 5829-5838.
83. Marwa B. Sabri MSc and Ahmed S. Abdulamir. (2014). *In vitro* study on using bacteriophages in the treatment of pathogenic *Escherichia coli* in Iraq. *Iraqi J Med Sci*; **12** (2). Pp: 131-138.
84. Iona H. B. and Mark D. L. (2014). Stress sensitivity assays of bacteriophages associated with *Staphylococcus aureus*, causal organism of bovine mastitis. *Afr. J. Microbio. Res.*, **8** (2). Pp: 200-210.

85. Yoon, S.-S.; Kim, J.W.; Breidt, F. and Fleming, H.P.(2001). Characterization of a lytic *Lactobacillus plantarum* bacteriophage and molecular cloning of a lysine gene in *Escherichia coli*. mt. J. Food Microbial. 65: 63—74.
86. Clark JR and March JB: (2006). Bacteriophages and biotechnology: vaccines, gene therapy and antibacterials. *Trends Biotechnol*, 24 (5). Pp: 212-218.
87. Mahadevan M. Sundar, Naganada G.S., Arijit Das, Sourav Bhattacharya and Sandeep Suryan. (2009). Isolation of Host-specific Bacteriophage from Sewage Against Human Pathogens. *Asian J. Biotechnol.*, 1 (4). Pp: 163-170.
88. Scudiero D. A., R. H. Shoemaker, K. D. Paull, A. Monks, S. Tierney, T. H. Nofziger, M. J. Currens, D. Seniff and M. R. Boyd, (1988). Evaluation of a Soluble Tetrazolium/For- mazan Assay for Cell Growth and Drug Sensitivity in Culture Using Human and Other Tumor Cell Lines,” *Cancer Research*, 48, (17), Pp: 4827-4833.
89. Marshall N. J., C. J. Goodwin and S. J. Holt (1995). A Critical Assessment of the Use of Microculture Tetrazolium As-says to Measure Cell Growth and Function,” *Growth Re- gulation*, 5 (2) Pp: 69-84
90. Stevens M. G. and S. C. Olsen, (1993). Comparative Analysis of Using MTT and XTT in Colorimetric Assays for Quanti-tating Bovine Neutrophil Bactericidal Activity,” *Journal of Immunological Methods*, 157 (1-2), Pp: 225-231.
91. Fischetti V. A., (2010). Bacteriophage Endolysins: A Novel Anti-Infective to Control Gram-Positive Pathogens,” *International Journal of Medical Microbiology*, 300 (6), Pp: 357-362.
92. Appaiah C. B., S. Sudarson, B. R. Anupama, S. Bharathi and S. Padmanabhan. (2012). Staphylococcus Bacteriophage Tails with Bactericidal Properties: New Findings. *Biotechnology and Applied Biochemistry.*, 59 (6). Pp: 495-502.
93. Vipra A. A., S. N. Desai, P. Roy, R. Patil, J. M. Raj, N. Narasimhaswamy, V. D. Paul, R. Chikkamadaiah and B. Sriram, (2012). Anti-Staphylococcal Activity of Bacteriophage Derived Chimeric Protein P128,” *BMC Microbiology*, 12, Pp. 41.
94. Rabbani I., U. Radoja, S. Ray, A. Selim and C. Weston, (2004). The Dynamics of Bacteriophage T4 Binding to Esche- richia coli, *Journal of Experimental Microbiology and Immunology*, 5, Pp: 61-64.
95. Goldberg E., L. Grinius and L. Letellier, (1994). Recognition, Attachment, and Injection, In: J. W. Drake, K. N. Kreu- zer, G. Mosig, D. H. Hall and F. A. Eiserling, Eds., *Molecular Biology of Bacteriophage T4*, *American Society for Microbiology*, Washington DC, Pp: 347-356.
96. Jonczy k, E., Klak, M., Miedzybrodzki, R., and Gorski, A. (2011). The influenceof external factors on bacteriophages–review. *Folia Microbiol. (Praha)* 56, 191–200.
97. Slopek, S., B. Weber-Dabrowska, M. Dabrowski, and Kucharewicz Krukowska,, (1987). Results of bacteriophage treatment of suppurative bacterial infections in the years 1981-1986. *Arch Immunol Ther Exp Warsz.* 35: 569-83.

